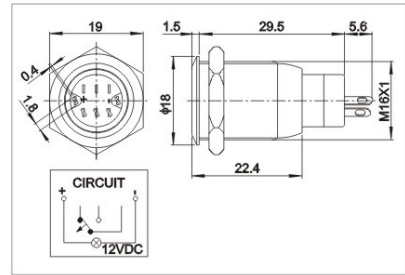
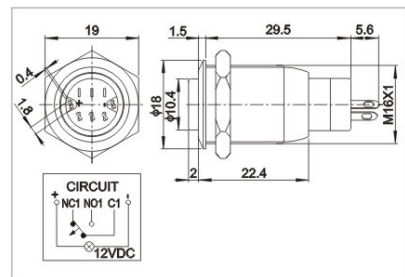




安装孔尺寸 Mounting hole size:  $\Phi 16\text{mm}$   
 开关额定值 Switch rating: 3A/250VAC  
 开关组合 Switch combination: 1NO1NC/2NO2NC  
 操作类型 Operation types: 自复式 Resettable  
 自锁式 Self-locking  
 头部形状 Head shape: 平形 Flat  
 带灯方式 Lamp type: 环形带灯 Ring Illuminated  
 外壳材料: 黄铜镀镍/不锈钢  
 Enclosure material: nickel plated brass/stainless stell  
 防护等级 Degree of protection: IP67, IK08



安装孔尺寸 Mounting hole size:  $\Phi 16\text{mm}$   
 开关额定值 Switch rating: 3A/250VAC  
 开关组合 Switch combination: 1NO1NC/2NO2NC  
 操作类型 Operation types: 自复式 Resettable  
 自锁式 Self-locking  
 头部形状 Head shape: 高平形 High flush  
 带灯方式 Lamp type: 环形带灯 Ring Illuminated  
 外壳材料: 黄铜镀镍/不锈钢  
 Enclosure material: nickel plated brass/stainless stell  
 防护等级 Degree of protection: IP67, IK08



产品规格		Specifications	QN16-C1	QN16-C2
尾部配置	Tail configuration		接线插片 Connection terminal(1.8 x 0.4)	接线插片 Connection terminal(1.8 x 0.4)
开关规格	Switch specifications		3A/250VAC	3A/250VAC
接触电阻	Contact resistance		< 50mΩ	< 50mΩ
绝缘电阻	Insulation resistance		> 1000MΩ	> 1000MΩ
绝缘强度	Dielectric Intensity		2000VAC	2000VAC
环境温度	Ambient temperature		-20°C ~ +55°C	-20°C ~ +55°C
机械寿命	Mechanical life		50万次以上 500,000 cycles	50万次以上 500,000 cycles
电气寿命	Electrical life		5万次以上 50,000 cycles	5万次以上 50,000 cycles
面板厚度	Panel thickness		1~15mm	1~15mm
螺母扭矩	Nut torque		5 ~ 14Nm	5 ~ 14Nm
操作压力	Operation pressure		约3 ~ 5N About 3 ~ 5N	约3 ~ 5N About 3 ~ 5N
操作行程	Operation stroke		约2.8mm About 2.8mm	约2.8mm About 2.8mm
防护等级	Protection level		IP67, IK10	IP67, IK10
材料	触点	Contact	银合金 Silver alloy	银合金 Silver alloy
	按键	Button	黄铜镀镍/不锈钢 Nickel plated brass/stainless stell	黄铜镀镍/不锈钢 Nickel plated brass/stainless stell
	外壳	Enclosure	黄铜镀镍/不锈钢 Nickel plated brass/stainless stell	黄铜镀镍/不锈钢 Nickel plated brass/stainless stell
	底座	Base	PBT	PBT
灯珠参数	灯珠类型	LED type	环形带灯 Ring Illuminated(LED)	环形带灯 Ring Illuminated(LED)
	额定电压	Rated voltage	6V/12V/24V/110V/220V	6V/12V/24V/110V/220V
	灯珠颜色	LED color		
	灯珠寿命	LED life	40000小时 hours	40000小时 hours