



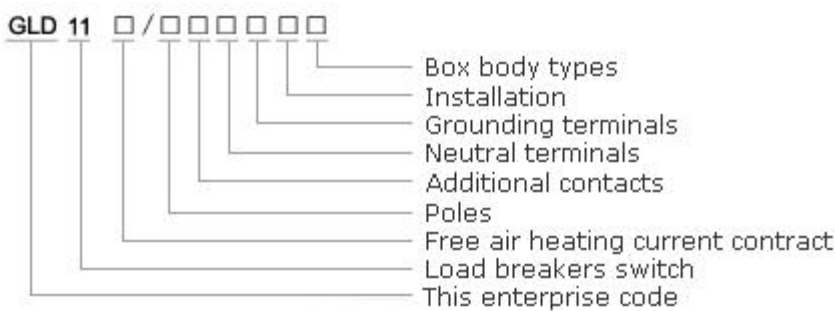
Use

GLD11 is my company imported advanced technology to develop the most reliable performance of small volume, load breakers switch suitable for air-conditioning and ventilation system, water pump, suitable for industrial equipment, safety switch and used as insulation switches, equivalent to isolate KG20 overseas distribution circuit breaker KG100 - type load switch.

Normal working condition

1. Air temperature is not around, and its +40°C, than the average temperature within 24h not exceed +35°C;
2. Around the upper air temperature is not exceed -5°C;
3. Install the location at an altitude of not more than 2000m;
4. The highest temperature for +40°C, the air, no more than 50% of relative humidity in low temperature can allow the relative humidity is high, such as 90% 20°C to 90%. when due to temperature change. Occasionally produces Ion should adopt special measures.

The product model and its meaning



Features

Safety

The switch from the insulation disconnection contacts, reached 13 x 14mm VDE0113. Considerably more than the security requirements, in many cases, switch security level than the world existing electric block.

Flexible installation type

Switch suitable panel and can be used, installation, and base type can easily installed base and safely use screws or 35mm rail system installation, most strong flexibility and adaptability, additional contactor and neutral terminals may not remove switch and easily to increase the additional contactor.

Convenient installation

Built-in screws can prevent manual operation sliding, pneumatic or power tools, ensure the best performance play during the installation and speed.

The main technical parameters

Using category	IEC/BS/VDE Rated nominal value					
Current or power	Hot currents Lth	Interaction load Ac21	Ac23 Accidentally switched motor or high inductance load		Ac3 Direct online start motor	
			3*220-240v	3*380-440v	3*220-240v	3*380-440v
GLD11-25	25A	25A	4KW	7.5KW	3KW	5.5KW
GLD11-32	32A	32A	5.5KW	11KW	4KW	7.5KW
GLD11-40	40A	40A	7.5KW	15KW	7.5KW	11KW
GLD11-63	63A	63A	11KW	22KW	11KW	12.5KW
GLD11-80	80A	80A	18.5KW	30KW	15KW	22KW
GLD11-100	100A	100A	22KW	37KW	18.5KW	30KW

Note: 1. With adjustable axis, the length of 200mm in axis

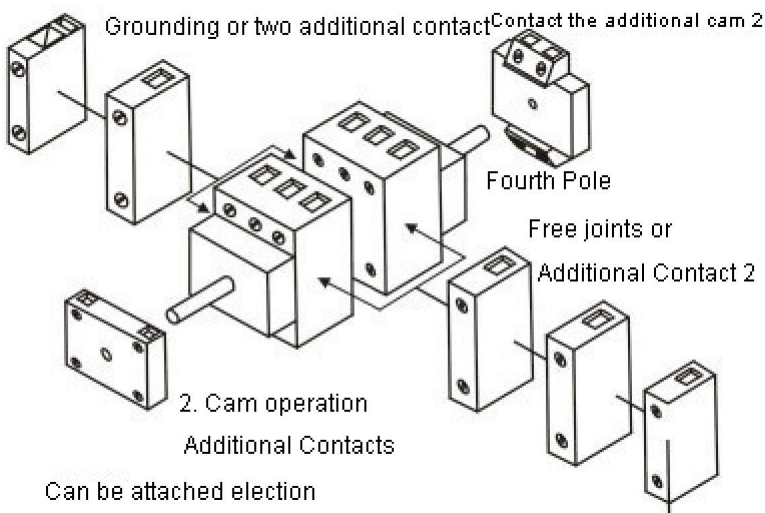
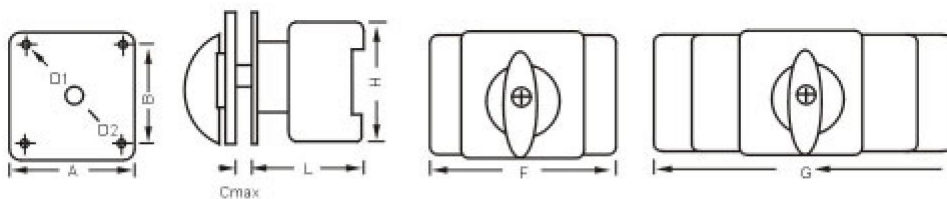
2. This type with the ground.

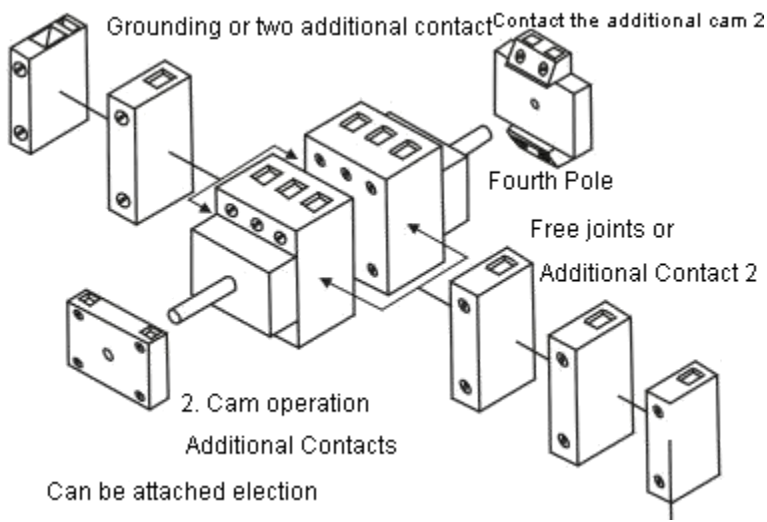
3. P, N - a neutral grounding terminals, E

4. Above all types of free optional accessories, lateral installation additional contacts, top mounted additional contacts, active, handle, door padlock interlock, etc

Switch	Type	Poles	A	B	Cam	D ₁	D ₂	F	G	H	L
GLD11-25 GLD11-32	On-Off	3 extremely	64	48	4	4	22	42	-	54	62
	On-Off	4 extremely	64	48	4	4	22	56	-	54	62
	On-Off	3 extremely+N	64	48	4	4	22	56	-	54	62
	On-Off	3 extremely+N+E	64	48	4	4	22	69	-	54	62
	On-Off	6 extremely	64	48	4	4	22	42	84	54	62
GLD11-40 GLD11-63	On-Off	3 extremely	64	48	4	4	22	50	-	64	67
	On-Off	4 extremely	64	48	4	4	22	66	-	64	67
	On-Off	3 extremely+N	64	48	4	4	22	66	-	64	67
	On-Off	3 extremely+N+E	64	48	4	4	22	82	-	64	67
	On-Off	6 extremely	64	48	4	4	22	-	100	64	67
GLD11-80 GLD11-100	On-Off	3 extremely	64	48	4	5.5	22	70	-	80	82
	On-Off	4 extremely	64	48	4	5.5	22	92	-	80	82
	On-Off	3 extremely+N+E	64	48	4	5.5	22	104	-	80	82
	On-Off	6 extremely	48	68	4	5.5	22	-	140	80	82

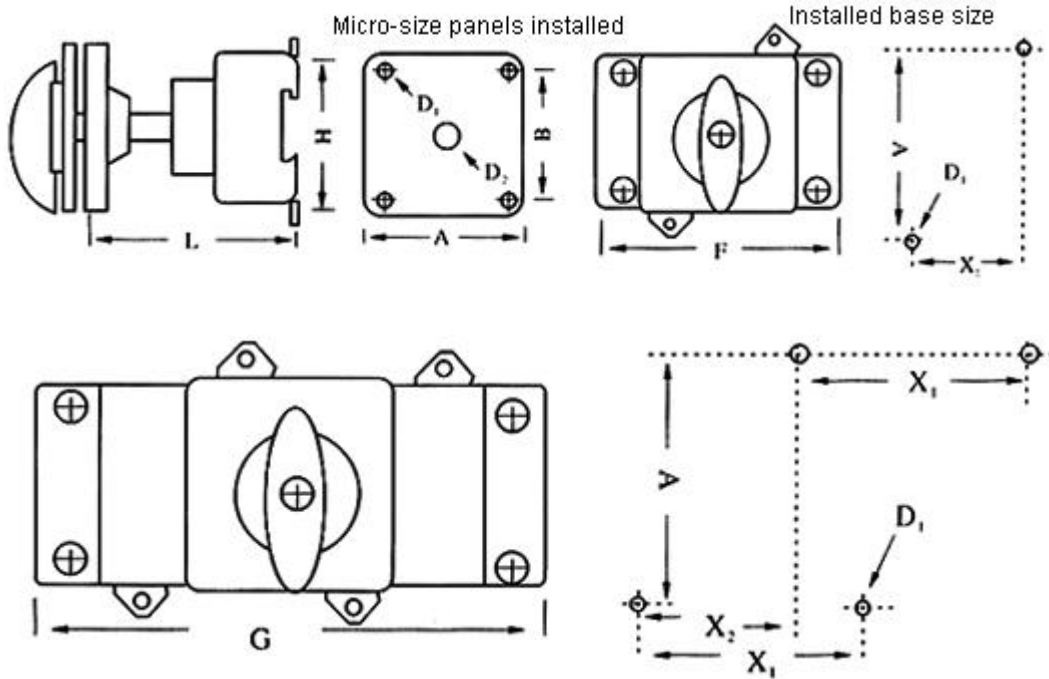
Shape and size installation dimensions





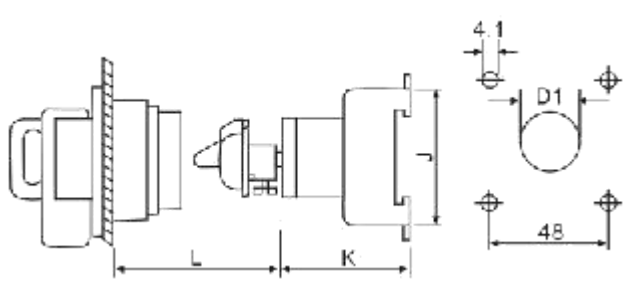
Parameters

Switch	Type	Poles	B	D ₁	F	H	L	X ₁	Y
GLD11-25/GLD11-32	On-Off	3 Poles	44	4	46	54	52	22	60
GLD11-40/GLD11-63	On-Off	3 Poles	45	4	53	64	59	25	70
GLD11-80/GLD11-100	On-Off	3 Poles	45	5.5	70	80	65	25	90



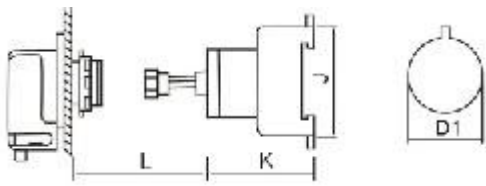
Parameters

Switch	Type	Poles	A	B	Cam	D ₁	D ₂	F	G	H	L _{min}	L _{max}	X ₁	X ₂	Y
GLD11-25 GLD11-32	On-Off	3 Poles	64	48	4	4	22	42	-	54	106	176	22	-	60
	On-Off	4 Poles	64	48	4	4	22	56	-	54	106	176	22	-	60
	On-Off	3 Poles+N	64	48	4	4	22	56	-	54	106	176	22	-	60
	On-Off	3 Poles+N+E	64	48	4	4	22	69	-	54	106	176	22	-	60
	On-Off	6 Poles	64	48	4	4	22	42	84	54	103	183	32	22	60
GLD11-40 GLD11-63	On-Off	3 Poles	64	48	4	4	22	50	-	64	123	193	25	-	70
	On-Off	4 Poles	64	48	4	4	22	66	-	64	123	150	25	-	70
	On-Off	3 Poles+N	64	48	4	4	22	66	-	64	123	193	25	-	70
	On-Off	3 Poles+N+E	64	48	4	4	22	82	-	64	123	193	25	-	70
	On-Off	6 Poles	64	48	4	4	22	-	100	64	126	196	50	25	70
GLD11-80 GLD11-100	On-Off	3 Poles	64	48	4	5.5	22	70	-	80	126	198	25	-	90
	On-Off	4 Poles	64	48	4	5.5	22	92	-	80	126	198	25	-	90
	On-Off	3 Poles+N+E	64	48	4	5.5	22	92	-	80	126	198	25	-	90
	On-Off	6 Poles	88	68	4	5.5	22	-	140	80	137	209	70	25	90



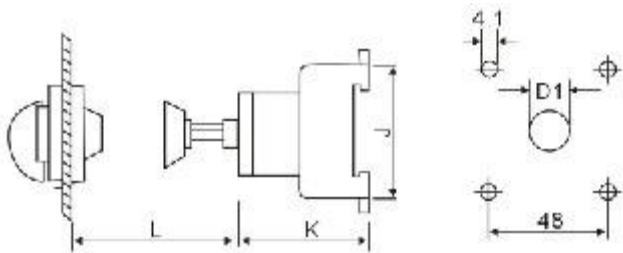
Padlocks

Specifications	Size(mm)			
	D1	K	Lmin	Lmax
GLD11-25	30.5	50	21	100
GLD11-32	30.5	50	21	100
GLD11-40	30.5	61	22	100
GLD11-63	30.5	61	22	100
GLD11-80	30.5	68	23	100
GLD11-100	30.5	68	23	100



Panel

Specifications	Size(mm)			
	D1	K	Lmin	Lmax
GLD11-25	22	50	32	118
GLD11-32	22	50	32	118
GLD11-40	22	61	32	118
GLD11-63	22	61	32	118
GLD11-80	22	68	32	118
GLD11-100	22	68	32	118



Lock

Specifications	Size(mm)			
	D1	K	Lmin	Lmax
GLD11-40	39	61	61.6	118
GLD11-63	39	61	61.6	118
GLD11-80	39	68	61.5	118
GLD11-100	39	68	61.5	118