

The PE 2300 series designed for Inverters



PE2300



Description :

- High performance with differential mode choke
- Good low frequency attenuation
- Available for inverter and variable speed motor device, which meet the RFI electromagnetic compatibility of European standards.
- Custom design acceptable

Typical Applications :

- Inverter
- Variable frequency drive
- Electrical and electronic equipment
- Building automation
- Industrial applications
- Machinery
- Electronic data processing equipment
- Various noisy applications requiring good filter performance

Electrical Schematic: :

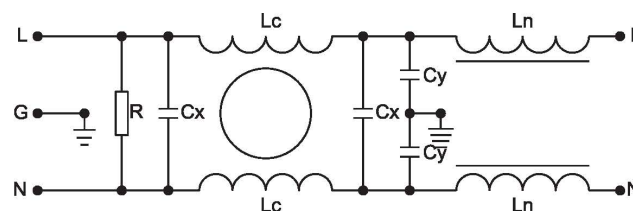


Fig 1

Specification :

Rated Voltage:	120/250 VAC
Rated Current:	6A~25 A
Operating Frequency:	50/60 Hz
Temperature range:	25/085/21
Test Voltage (1min):	
Line to Ground:	2000 VAC
Line to Line:	1450 VDC
Leakage Current(Max)	
Line to Ground:	@ 250 VAC 50Hz

Filter Selection Table :

Filter	Rated current (A)	Rated voltage (V)	Leakage Current (mA)	Input/Output connections	Electrical Schematic	Dimension
PE2300-6-06	6	120/250	0.5	06	1	1
PE2300-10-06	10	120/250	0.5	06	1	1
PE2300-16-06	16	120/250	1.0	06	1	2
PE2300-25-06	25	120/250	1.0	06	1	2

All dimensions in mm; 1 inch=25.4mm

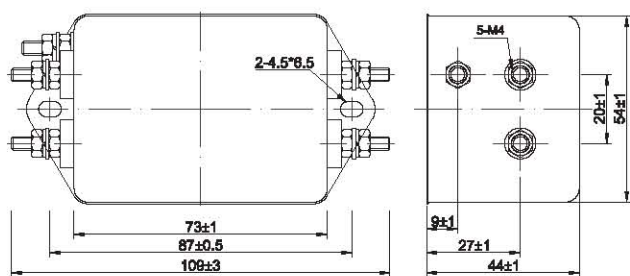


Fig 1

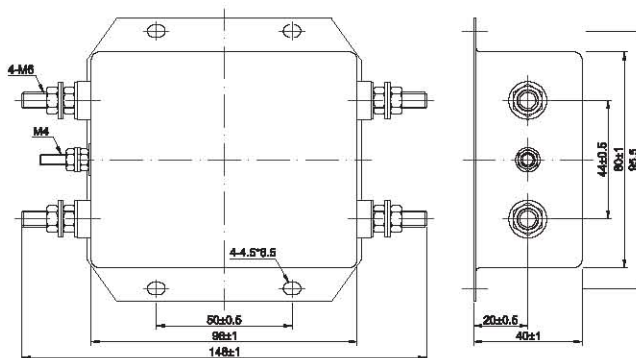
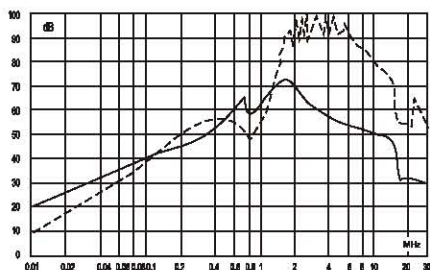


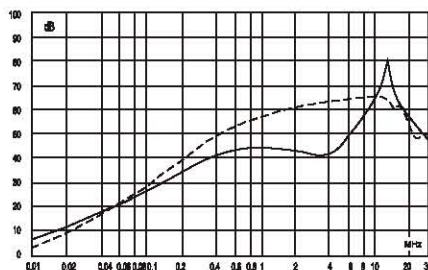
Fig 2

Insertion Loss in dB:

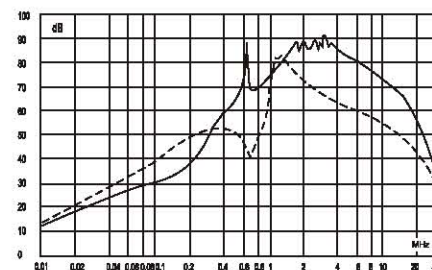
(Measured in 50Ω system , as IEC/CISPR NO.17)



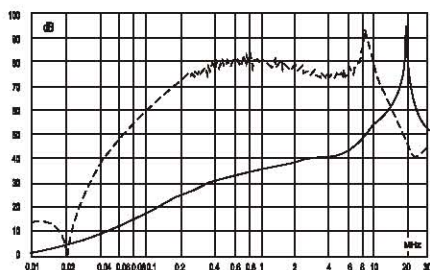
6A



10A



16A



25A