

The PE 2600 Household Equipment Appliance Filters.



**PE2600**



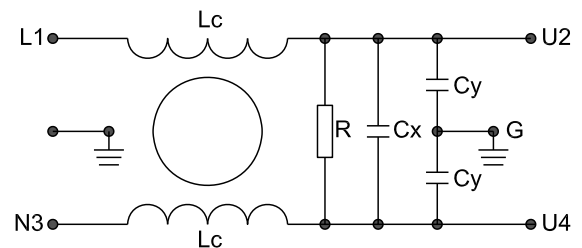
### Description :

- Home appliance suppression EMI filters -Cylindrical power line filter, unique mounting style
- Excellent interference suppression for CM and DM
- Using high quality materials,high ratio of performance to cost make
- Custom design acceptable
- ODM/OEM welcome

### Typical Applications :

- Ditto Machine
- Washing Machines
- Coffee Machines
- Dishwashers
- Vacuum Cleaners
- Blenders
- Microwave Ovens
- Air Conditioners
- Vending Machines
- Other White Goods

### Electrical Schematic :




**Fig 1**

### Specification :

Rated Voltage:	120/250VAC
Rated Current:	1A~20A
Operating Frequency:	50/60Hz
Temperature range :	HPF 25/085/21
Test Voltage ( 1min ):	
Line to Ground:	2000VAC
Line to Line:	1450VDC

### Filter Selection Table :

Filter	Rated current (A)	Rated voltage (V)	Leakage Current (mA)	Input/Output connections 	Electrical Schematic	Dimension
PE2600-6-01	6	120/250	0.5	01	1	1
PE2600-10-01	10	120/250	0.5	01	1	1
PE2600-16-01	16	120/250	1	01	1	1
PE2600-20-01	20	120/250	1	01	1	1

### Outline Drawing and Dimensions:

(Unit:mm)

All dimensions in mm; 1 inch=25.4mm

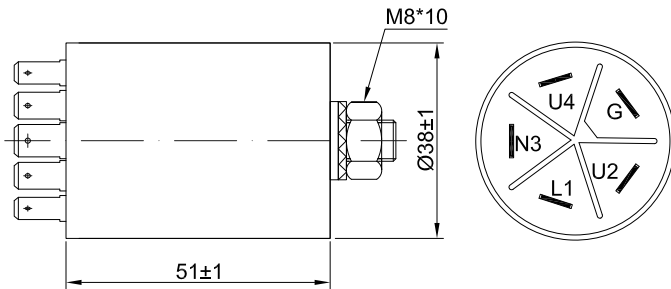
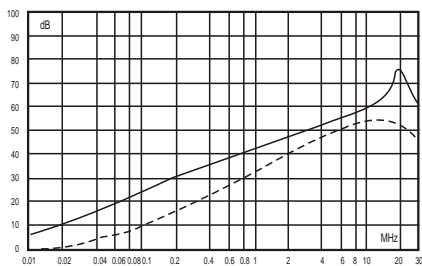


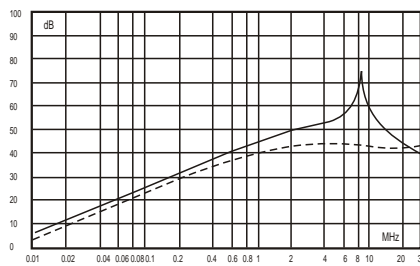
Fig 1

### Insertion Loss in dB:

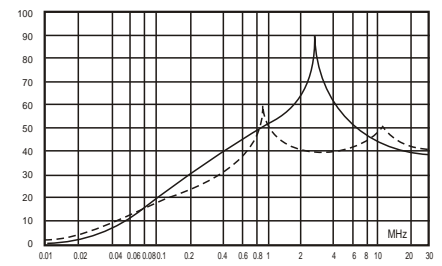
(Measured in 50Ω system , as IEC/CISPR NO.17)



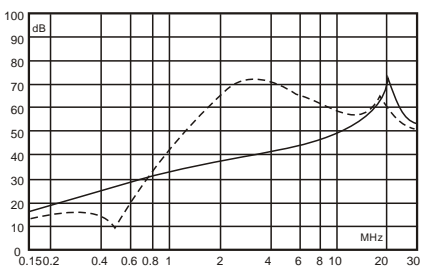
6A



10A



16A



20A

----- Differential Mode  
 ——— Common Mode